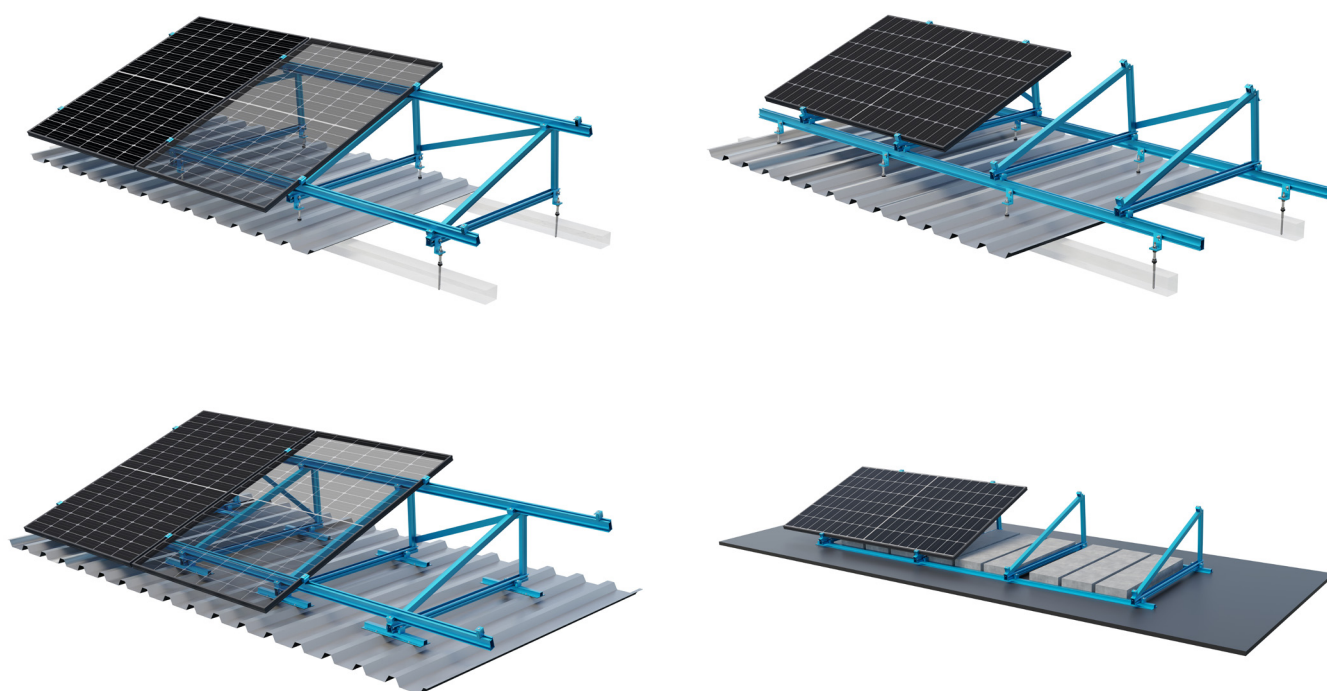


**Technical Data****DELTA TRIANGLE**

for elevated systems



S:FLEX Triangle Delta allows framed and frameless PV modules to be easily installed on flat roofs and roofs with low pitches on old and new buildings, mechanically fixed or with ballast. Thanks to a flexible module holder and a height-adjustable end holder with one-click technology, this fastening system allows maximum flexibility when installing virtually all framed module types with a frame height of 25 to 50 mm. The installation of frameless PV modules is made possible by tailor-made certified laminate clamps.

The fully pre-assembled S: FLEX Delta Triangle is delivered collapsed to reduce transport and storage costs as well as installation time. Thanks to its compact dimensions, up to 252 triangles can be stacked in secure packaging on one Euro-pallet.

Due to the adjustable height of the mounting rails, a flat PV field can even be achieved on uneven roof surfaces. For systems with the S:FLEX Delta Triangle, a verifiable structural analysis can be provided on request in order to meet one of the application requirements for a building permit.

All components are made of aluminium and stainless steel. The high degree of corrosion resistance ensures a long service life and offers the possibility of complete recycling.

**An overview of the advantages:**

- Flexible to use
- Various installation options
- Comprehensive module compatibility
- Easy storage, quick assembly
- Excellent adaptability
- Maximum safety
- Long durability

<b>Applications:</b>	Flat roofs with green-roof, gravel, foil and bitumen coverings, as well as slightly inclined roofs with trapezoidal / corrugated / fibre cement / sandwich panel coverings
<b>Pitch:</b>	Available in 5° steps from 5° to 45°, other angles possible
<b>Building height:</b>	Up to 25 m
<b>Max. Load:</b>	Snow load up to 2,4 kN/m <sup>2</sup> , Wind load up to 2,4 kN/m <sup>2</sup>
<b>PV modules:</b>	Framed and frameless
<b>Module orientation:</b>	Portrait / landscape
<b>Module field size:</b>	Unlimited
<b>Module field location:</b>	Unrestricted
<b>Mounting rails, triangles:</b>	Extruded aluminium EN-AW-6063 T6
<b>Small parts:</b>	Stainless steel X5CrNi18-10 A2-70
<b>Colours:</b>	Natural, aluminium
<b>Warranty:</b>	10 years for the durability of the materials
<b>Note:</b>	The pre-assembled triangles are folded together in a sturdy box to save space. Up to 252 triangles can be stacked on one Euro-pallet for lower logistics and storage costs.